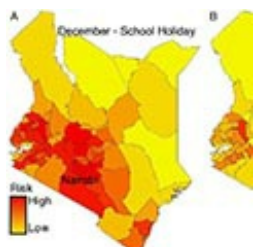
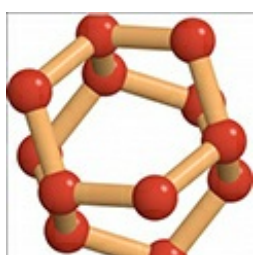


Cell phone data can track disease



Tracking mobile phone data is often associated with privacy issues, but these vast datasets could be the key to understanding how infectious diseases are spread seasonally, according to a study by Princeton University and Harvard University researchers.

Study calculates the speed of ice formation



Researchers have for the first time directly calculated the rate at which water crystallizes into ice in a realistic computer model of water molecules. A more precise knowledge of the initial steps of freezing could help improve weather forecasts and climate models. (From our research blog, *Princeton Journal Watch*.)

Faculty profile: Jonathan Pillow



Jonathan Pillow, an assistant professor of psychology and the Princeton Neuroscience Institute, aims to understand the brain by using math and statistics to make sense of the reams of information collected by brain-imaging studies.

On warmer Earth, most of Arctic may remove, not add, methane



Thanks to methane-hungry bacteria, the majority of Arctic soil might actually be able to absorb methane from the atmosphere rather than release it. Furthermore, that ability seems to become greater as temperatures rise, new research suggests. (From our research blog, *Princeton Journal Watch*.)

New pathways for nickel chemistry

Using a light-activated catalyst, researchers have unlocked a new pathway in nickel chemistry to construct carbon-oxygen (C-O) bonds that would be highly valuable to pharmaceutical and agrochemical industries.

Events

Free and open to the public

Exhibition: After Genocide: Collected Stories Aug. 24-Oct. 8.

Two projects, one on the children of Holocaust survivors and the other on widows in a Cambodian village, highlight the aftermath of genocide. *Robertson Hall, Princeton University*

Nassau Street Sampler

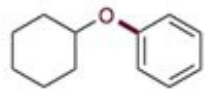
Sept. 17, 5:00 p.m.– 8:00 p.m. The event features local cuisine, student performances, watercolor demonstrations, and a special campus preview of Cézanne and the Modern. *Princeton University Art Museum.*

The China Challenge: Shaping the Choices of a Rising Power

Wed., Sept. 30 at 4:30 p.m. Thomas J. Christensen, the William P. Boswell Professor of World Politics of Peace and War, and director of the China and the World Program at the Woodrow Wilson School, will talk about his new book. *Robertson Hall, Princeton University*

Research at Princeton is a monthly newsletter publicizing discoveries made by University faculty, research staff and students. It is produced by the Office of the Dean for Research.

[Visit our website](#) for more news.



C-O coupling

(From our research blog, *Princeton Journal Watch*.)



Follow us

[Princeton University](#) | [Office of the Dean for Research](#) | [More research news](#)

[Click to view this email in a browser](#)

If you no longer wish to receive these emails, please reply to this message with "Unsubscribe" in the subject line or simply click on the following link: [Unsubscribe](#)

[Click here to forward this email to a friend](#)

Princeton University Office of the Dean for Research
91 Prospect Ave.
Princeton, NJ 08540
US

[Read](#) the VerticalResponse marketing policy.

vertical DELIVERED BY
response
Try It Free Today!