

# Research

at Princeton

May 31, 2016



## Princeton Research Day highlights work from opera to plasma

More than 150 undergraduates, graduate students and postdoctoral researchers from all disciplines shared their work at the first-ever Princeton Research Day.

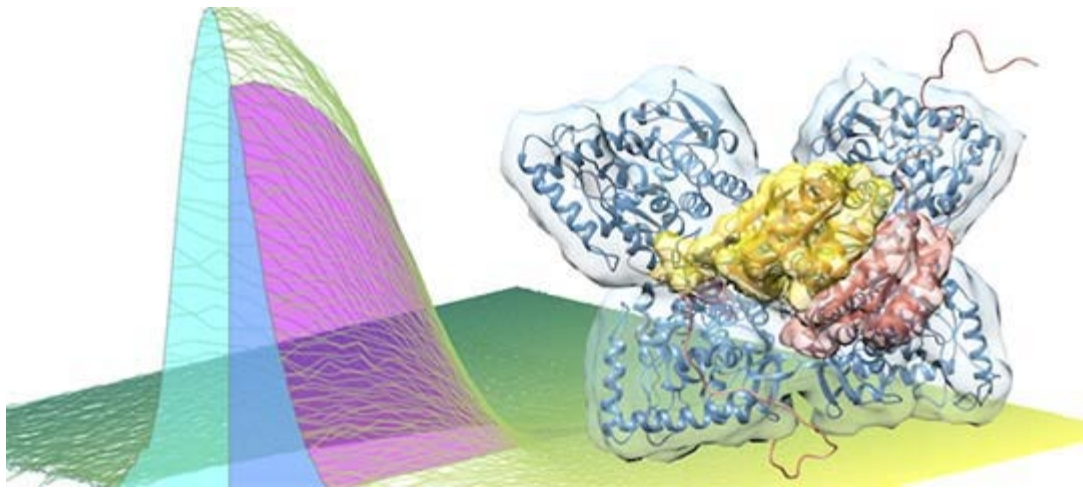
---



## Princeton part of \$40 million Simons Observatory collaboration to investigate the early universe

The new astronomy facility will investigate cosmic microwave background radiation to better understand the physics and structure of the universe.

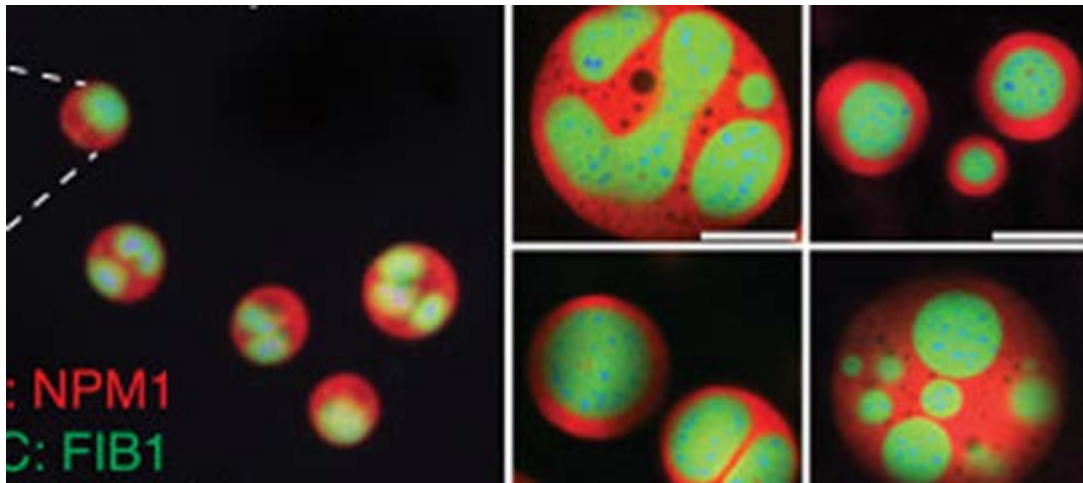
---



### Scientists capture the elusive structure of essential digestive enzyme

The enzyme turns the essential amino acid phenylalanine – found in eggs, beef and as an additive in diet soda – into tyrosine, which is important for human health.

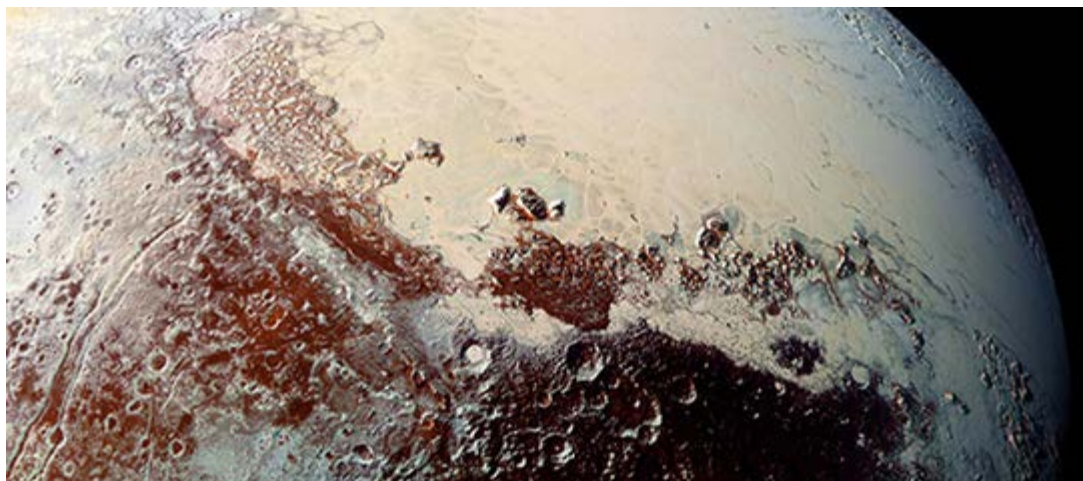
---



### Fluid self-organizes into structure that controls cell growth and health

Rather like how oil and water can coexist yet remain separate, the nucleolus develops liquid subcompartments, which enable its critical functions.

---



## Unique Pluto, solar wind interactions similar to those of larger planets

It's not comet-like, and it's not planet-like. It's in-between, say researchers.

---

### Events

Free and open to the public



#### Exhibition to focus on 'Women, Art and Social Change'

The exhibition brings together works created during the 45-year lifespan of the Newcomb enterprise—an artistic and commercial venture which provided a rare opportunity for Southern women to support themselves.

Princeton University Art Museum  
Saturday, May 7 through Sunday, July 10

#### Ansel Adams to Edward Weston: Celebrating the Legacy of David H. McAlpin

This exhibition of approximately 40 photographs celebrates the pioneering legacy of David H. McAlpin, Class of 1920.

Princeton University Art Museum  
Saturday, June 25 through Sunday, September 25

#### Summer Chamber Concerts

Four free concerts will be offered in June and July. Tickets (maximum of four per person) will be available at the Richardson Auditorium ticket office beginning at 6 p.m. on the evening of each performance. General seating begins at 7 p.m.

---

*Research at Princeton* is produced by the [Office of the Dean for Research](#)

[Visit our website](#)  
for more news



Follow us

Princeton University Office of the Dean for Research  
91 Prospect Ave.  
Princeton, New Jersey 08540  
US